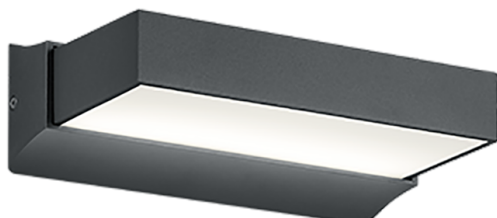


Wall lamp

CUANDO – 226660242

incl. 1x SMD LED, 11W · 1x 1400lm, 3000K



- **OSRAM inside**
- **Up and Down lighting**
- **Wallmounting**
- **IP65**
- **Not dimmable**

The CUANDO outdoor wall light impresses with its striking design and high-quality materials. The luminaire is made of die-cast aluminium and is ideal for outdoor use thanks to its IP54 protection rating. Thanks to the upward and downward light emission, the luminaire provides pleasant and effective lighting at the house entrance, balcony or patio area. The wall light has a width of 23 cm, a height of 7 cm and a projection of 14 cm. The anthracite-coloured design can be combined in a variety of ways and ensures a modern appearance. In addition, the luminaire features modern LED technology, which is characterised by high light quality and energy efficiency. Compared to conventional halogen lamps, up to 80% of energy costs can be saved. In addition, LED light sources have a long service life, produce less heat and protect the environment.

Material construction

Diecast aluminium ·
Anthracite
Plastic · White

Product dimensions

Width: 23cm
Height: 7cm
Depth: 13cm
Weight: 0,9kg

Technical data

Light source: SMD – LED (integrated)
Watt: 11W
Lumen: 1x 1400lm
Kelvin: 3000K
Color rendering (CRI): > 80 CRI
Lifetime: 35000H
Switching cycles: 20000x ON/OFF

Support & Download Links

[Manual](#)
[Drawing](#)
[Declaration of conformity](#)
[Safety notes](#)
[Warranty Statement](#)

operating voltage: 230V ~ 50Hz
Protection grade: 1
IP classification: IP65

Dealer information

EAN Code: 4017807388893
Customs number: 94051190900

Packaging dimensions & weight

Quantities: 1
Width: 24,5cm
Height: 14,5cm
Depth: 8,5cm
Weight: 1,1kg